

Treatment satisfaction of adult patients with moderate-to-severe atopic dermatitis treated with methotrexate in Madagascar.

Sendrasoa FA, Rakotonandrasana F, Razafimaharo TI, Ramarozatovo LS, Rapelanoro Rabenja F
*Department of Dermatology, University Hospital Joseph Raseta Befelatanana,
Antananarivo, Madagascar*

Objective: To explore patient satisfaction treated by methotrexate for their atopic dermatitis at Week 16

Take Away Message : Importance of assessing treatment satisfaction in patients suffering from atopic dermatitis which help inform counseling and decision-making strategies

Disclosure: There are no conflicts of interest in this work

Authors' contact: nasendrefa@yahoo.fr



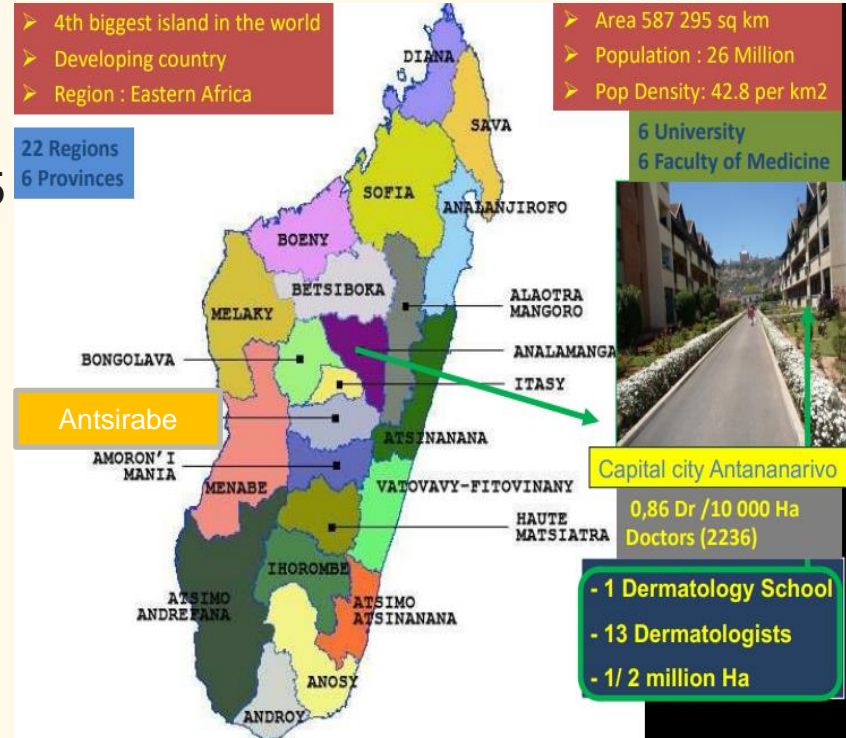
Introduction

- Prevalence of AD in children < 3 years in Madagascar: 5.6%, in adults 0.5%
- Main treatment of AD: topical corticosteroids
- Exploring AD patient benefits could improve disease management and patient's quality of life
- Interventional randomized trial assessing the safety and efficacy of methotrexate in adult patients with moderate to severe AD during 24 weeks
 - Objective of this study : to explore patient satisfaction treated by methotrexate at week 16



Methods

- Place of study: Antananarivo Madagascar
- Type : Cross-sectional study
- Period of study : March 2024 – March 2025
- Inclusion criteria : Adults with moderate-to-sever AD treated by methotrexate for ≥ 16 weeks
- Collect of data : by questionnaire survey
- Treatment Satisfaction Questionnaire for Medication version II (TSQM II) : scores 0-100 (higher scores \Rightarrow better outcomes)



Results

Table 1: Patient and clinical characteristics at the start of methotrexate treatment

Characteristics	Total (N=21)
Gender, male	12
Age in years, mean (SD)	46.4 (21.5)
Time since AD diagnosis in years, mean (SD)	15.5 (8.6)
Patients with family history of AD	14
BSA > 20%, proportion	16
Severity of AD at methotrexate initiation	Moderate : 12 Severe : 9
Itch numerical rating scale (0-10) at methotrexate initiation, mean (SD), range	7 (2), 1-9
Sleep disturbance numerical rating score (0-10) at methotrexate initiation, mean (SD), range	5(2), 2-8

AD : Atopic dermatitis, BSA : Body Surface Area, SD: Standard deviation

Results

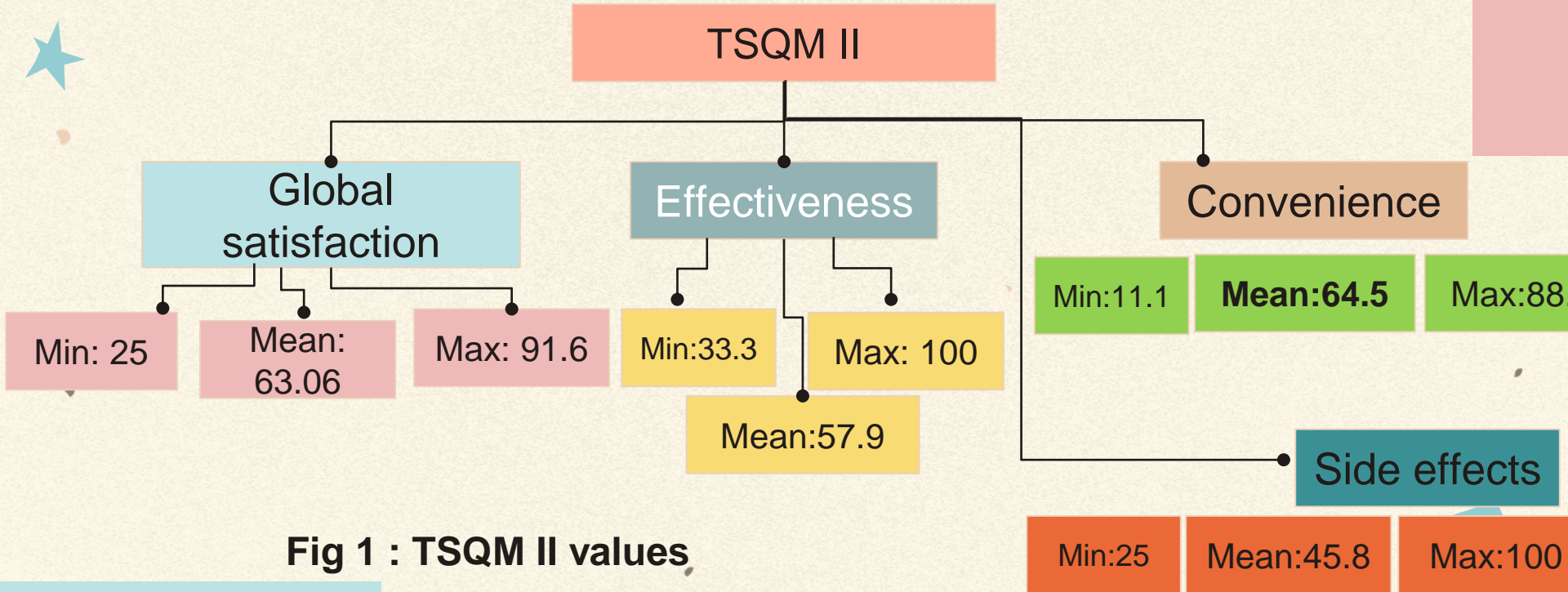


Fig 1 : TSQM II values

Table 2: Correlation between sociodemographic, clinical parameters and global satisfaction

Variables	Global satisfaction		OR	CI 95%	P-value
	≤50%	>50%			
Gender	Mean±SD				
Female	52.74±26.66			[3.8-25.6]	0.04
Male	70.8±16.47				
Age					
<50 years	4	8	1	[0.11-9,5]	1
≥50 years	3	6			
BSA involvement					
≤ 30%	1	4	0.04	[0.007-0.72]	0.01
> 30%	14	2			
AD Severity at inclusion (SCORAD)					
- Moderate	6	6	1.2	[0.16; 9.8]	1
- Severe	4	5			
AD severity at week 16					
- Mild	2	2	0.53	[0,04-6,65]	1
- Moderate	4	8			
- Severe	2	3			

Table 2:Correlation between sociodemographic, clinical parameters and global satisfaction

Variables	Global satisfaction		OR	CI 95%	P-value
	≤50%	>50%			
Prurit (EVA)					
≤5	2	3	0.11	[0.05-0.97]	0.04
>5	14	2			
QoL (DLQI score)					
0-5	3	9	0.1	[0.07-0.98]	0.02
6-30	7	2			
Sleep impairment					
Yes	3	6	0.7	[0.07-5.72]	1
No	5	7			

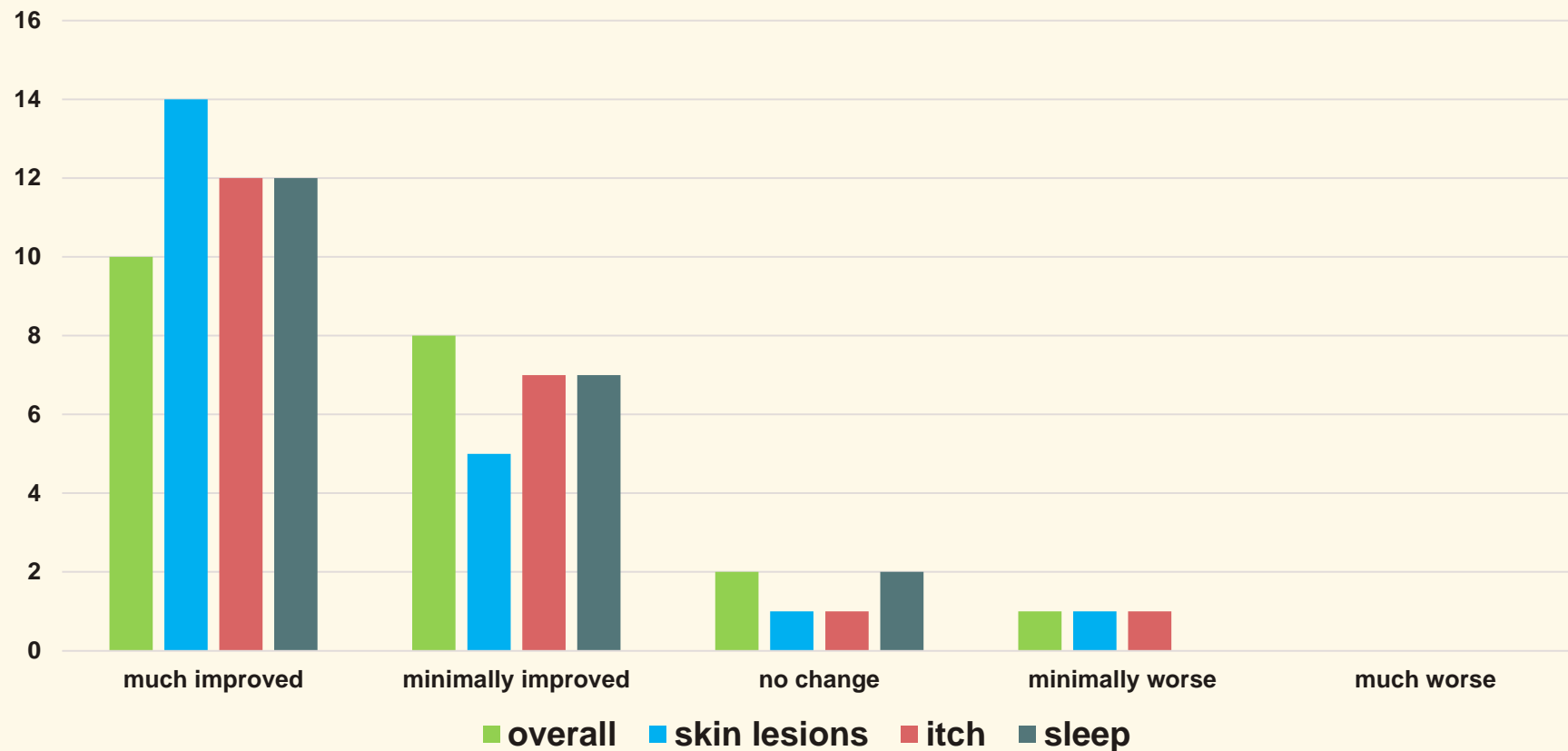


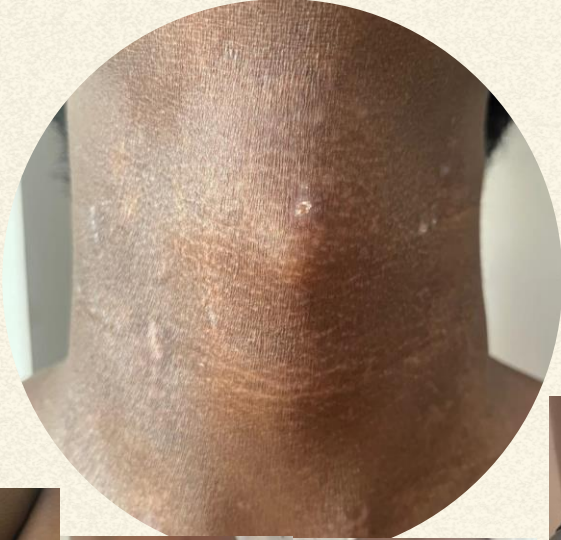
Fig 2: Patient global impression of change overall and by treatment dimension with methotrexate treatment

Week 0



Week 8

Week 0



Week 16



Week 0



Week 16

Conclusion

- Highest score in the treatment convenience, lowest score in undesirable side effects
- Factors associated with increased patient treatment satisfaction
 - male gender
 - improvement of itch and DLQI score
 - $BSA \leq 30\%$

Thank you for your attention!

